

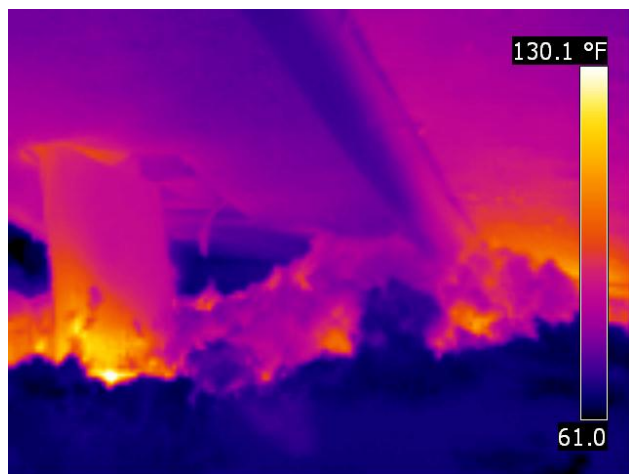


## Infrared Thermal Report

<b>Subject Scanned:</b>	Utility Chase and surrounding areas		
<b>Location:</b>	XXXXX NW Paisley Dr. Beaverton, OR 97006		
<b>Client:</b>	J.XXXXXX Roofing, Inc.		
<b>Image Time:</b>	11:50 am	<b>Image Date:</b>	01-13-2009

**Scope of Service:** Identify source of excessive moisture in attic space that has already been remediated by a professional mold company 12 months prior and now has extensive roof damage with visible mold growth once again.

**Findings:** The source of excessive moisture in the attic space is the result of the combined furnace and water heater exhaust flue (B-Vent) disconnected within the confined utility chase. The exhaust flue is venting into the utility chase then migrating into the attic space. The by product of burning natural gas is moisture which is condensing on the roof sheathing that is saturated and in need of replacement. The B-Vent changes from rigid pipe to flex pipe inside the chase and back to rigid pipe prior to exiting the enclosure and into the attic then through the roof. This appears to have been disconnected for years and was likely the cause of the original mold issues. It is highly recommended a competent licensed HVAC tech immediately repair this for life safety reasons as high levels of carbon monoxide were also detected in the attic space.



Infrared Image

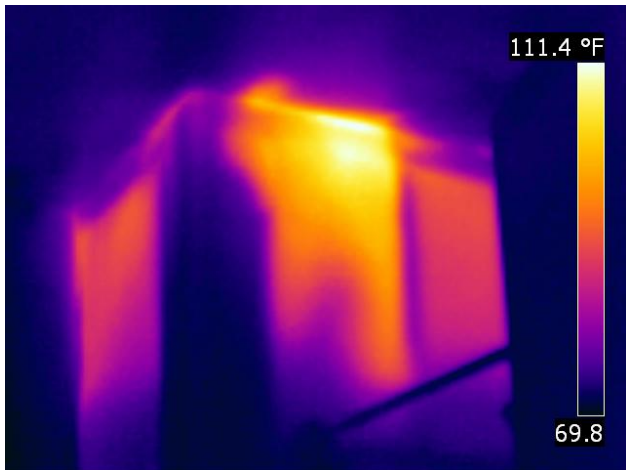


Visible Light Reference

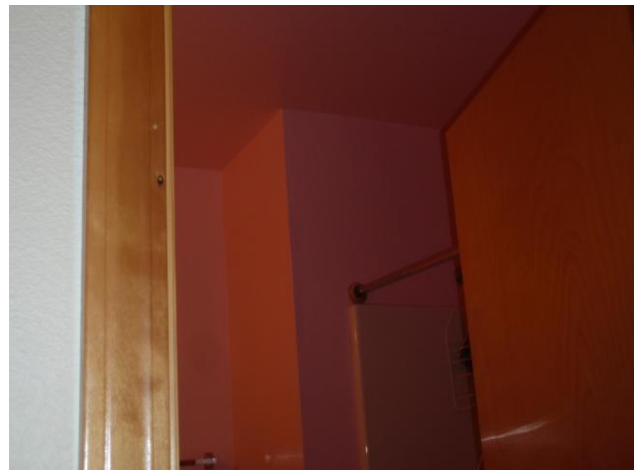


**IR Image & Visible Light Merged.**

**Description:** The infrared image shows the shielded exhaust vent with heated gasses exiting the hole where it passes through the ceiling and to the right at the end of the utility chase.



**Infrared Image**



**Visible Light Reference**



**IR Image & Visible Light Merged.**

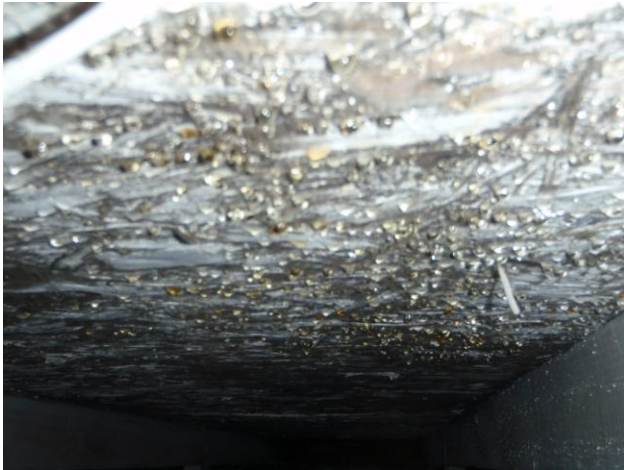
**Description:** The infrared image shows the interior wall in the shower stall backing the utility chase and below the attic space with a surface temperature of 111 degrees. This is the approximate location of the disconnected vent pipe.



**Visible Light**

**Description:** The vent hood was removed at the roof top and the disconnected vent was confirmed.

**Associated Damages**



**Condensation on roof sheathing**



**Fungus/Wood decayed roof sheathing.**

**Inspected by:** James Fronsdaahl - CBST

**Date:** January 13, 2009

*James Fronsdaahl*

**END REPORT**